

*Introducing the new track in town*

# **“AMPHI-TRACK”**

**for serious work or play**

**Amphibious Tracked Utility Type All-Terrain Vehicle  
For Extreme Remote Access -- ANYWHERE!**



# **AMPHI-TRACK**

**MANUFACTURED BY SNO-BUS MFG. CO., INC.**

**12155 N. HEMLOCK STREET**

**PENCE, WISCONSIN 54550**

**1-800-804-1218**



# AMPHI-TRACK

## SPECIFICATIONS

**BODY:** 1/4" fiberglass with tan gel coat

**ENGINE:** 25hp V-twin air-cooled 4-stroke industrial gas

**TRANSMISSION:** Torque converter primary drive coupled to a UV-20D mechanical transaxle with skid steering; forward and reverse with neutral safety switch

**AXLES:** 1 1/4" solid hardened steel, rear axle splined

**SPROCKETS:** 11-tooth standard; 7- and 9-tooth optional

**SUSPENSION:** Torsilastic spring front, middle leaf spring, iso-rubber teeter bar rear

**TRACKS:** 15" width X 62 lug, very aggressive patented pattern, .60 psi ground pressure (unloaded)

**CARGO BOX:** Wire mesh box with tailgate, 48"L x 62"W x 12"H

**PAYLOAD:** 1,200 lbs. land; 500 lbs. water; 1,000 lbs. water with optional pontoon tanks

**LIGHTING:** Twin 55W halogen headlamps, single red tail lamp

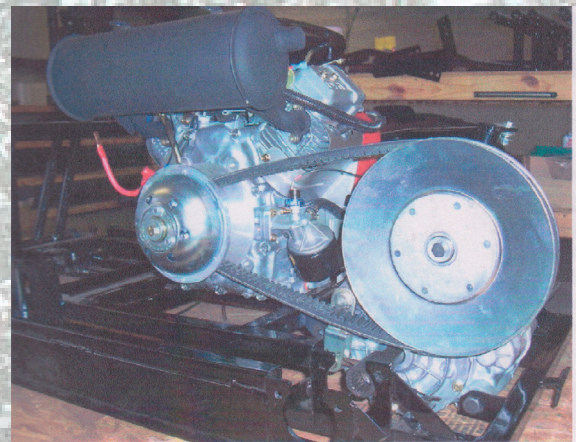
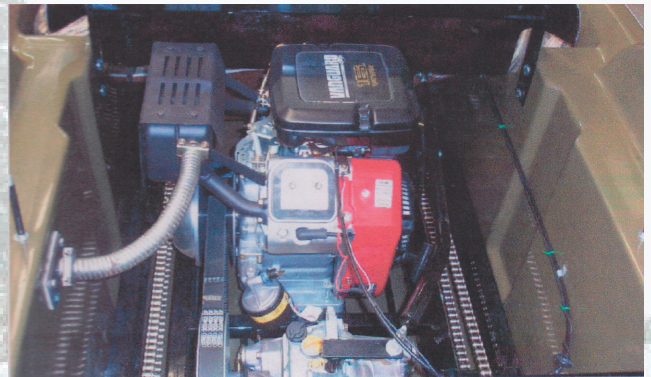
**HEIGHT:** 76"

**WIDTH:** 70"

**LENGTH:** 110"

**WEIGHT:** 1,248 lbs.

**SEATING:** 2 adults



### OPTIONS:

Pontoon Tanks • Reverse Lights  
Rollbar Light Kit • Windshield  
Wiper and Motor • Convertible Top  
Winch • Trailer Hitch with Ball  
Solid Steel Dump Bed



Manufacturers of Quality Hand Built Recreational Snow Vehicles  
[www.sno-busmfg.com](http://www.sno-busmfg.com)  
12155 N. Hemlock St. Pence, WI 54550

**1-800-804-1218**

